



IMPORTERS EXPORTERS SUPPLIERS

**BEHAL**  
INTERNATIONAL

SEE THE WORLD AT ONE PLACE

+91-9988067475 behalinternational75 Behal745 www.behalinternational.com

Behal International Behal International info@behalinternational.com

718-719, Garden Enclave, Opp. Ryan International School, Amritsar, Punjab.

## GENERAL INFORMATION

### SELECTION OF COLOURS:

While selecting colours, the artist should study the suitability of colours to his/her purpose. It is advisable to always go through the instructions on the pack. Using colours which are not suitable for his/her purpose may give unsatisfactory results.

Any unconventional use of colours on any unconventional surface may be undertaken by the artist at his/her own risk. The company will not be in a position to offer any compensation in such cases. Any product with a manufacturing defect with respect to raw materials or workmanship may, however, be replaced with a good product. It cannot be extended to 'compensation for the work spoilt due to use of the defective product.'

### PERMANENCY RATING FOR COLOURS:

No form of permanency rating for colours can be absolute. Permanency may vary for various internal and external reasons. Permanency ratings are mentioned in the catalogue/products in order to assist the artist in selecting appropriate colours for his/her specific purpose. Mentioned here are the 'three levels of permanency.'

#### Permanency rating A: Absolutely Permanent Colours

Do not fade in mass tone, wash or glazing, but register negligible fading in reduced tones.

#### Permanency rating B: Permanent Colours

Show no signs of fading in mass tone, wash or glazing, but register fading in reduced tones.

#### Permanency rating C: Durable Colours

Show very slight fading in mass tone. The fading is more in wash and glazing, appreciable more in reduced tones.

#### Transparency rating:

Opaque

Semi-transparent

Transparent

For details, refer to the shades cards

### MEANING OF 'HUE'

The use of word 'HUE' denotes that a substitute pigment has been used in place of the traditionally used artists' pigment. This is done in case the cost of the original pigment is prohibitive or if it is very toxic. Sometimes the alternative pigment is also introduced to increase the permanency of the colours.

### DETERIORATION OF PAINTINGS – FACTORS

**Light:** Discolouration and yellowing of varnishes is mainly an action of light, more so of ultra-violet rays. Paintings are at a greater risk and should be protected by glass. It is advisable to place paintings where they are not exposed to direct sunlight. Lights bounced from open grounds and water bodies also harm the paintings in a similar manner.

**Heat:** Heat accelerates oxidation within the paint and varnish. Comparatively lower temperature is better for the painting and large fluctuations in temperature are not desirable.

**Humidity and Dampness:** Extreme humidity and dampness can cause fungus whereas extreme dryness contributes to internal stress in paintings. Humidity control is as important as temperature control for good life of paintings.

Paintings should not be stored in damp conditions where fungus can grow. Paintings should always be stored a little above the ground and away from the wall. Paintings should not be hung on the external walls. They should always be hung in a manner that there is air movement behind the paintings.

### CLEANING OF PAINTINGS:

Paintings can be cleaned of dust with a soft dry flat brush if the dust accumulated is not much. A simple way to avoid the build-up of dust is to incline the painting with the top leaning forward of the bottom when it is hung on the wall. Periodic cleaning with good picture cleaner would keep the colours bright and fresh. For removing dust and soot, vacuum cleaner can be used.

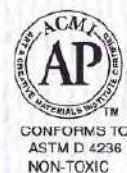
**Using a Backboard:** This is a very effective way of protecting the paintings. Backboard reduces the harmful effects of moisture and dust.

### TOXICITY TESTS:

As a member of the Art & Creative Materials Institute Inc. Boston, USA, most of our art materials have been evaluated by the institute in accordance with chronic hazards labeling standard under auspices of The American Society for Testing and Material (ASTM). Kokuyo Camlin products are classified either among those for which "no health label is required", as they do not contain any toxic material or others requiring a "health label with hazards warning."

Relevant labels appear on the products evaluated by the institute.

1. For a Non-Toxic Product



2. For a Product with a Toxic ingredient



Similarly most of the school products conform to EN 71-3 European Standard which means that these products are Non-Toxic and safe for children to use.



### CARE OF PAINTINGS:

Paintings are creative works made by emotionally charged professionals with many complex chemicals and hence may deteriorate if not mounted, housed, or maintained in a proper manner. We are therefore offering some suggestions on the subject for the benefit of the buyers. These suggestions are given with the best of our knowledge and experience and are in absolute good faith. The readers are requested to use their own discretion or consult an art restorer in case of need. Please note that the company will not be liable in this regard.

- For long life of the painting, it is desirable that it is made on good quality acid free paper or acid free canvas.
- The painting on paper should be glass framed with proper mount to provide breathing gap between painting and glass.
- While glass framing paintings use acid free mount and back-up boards to ensure long life of paintings.
- The canvas should be stretched properly to ensure that the colour film is neither overstretched nor slack.
- Varnishing does help in protecting the painting from various pollutants.
- The paintings should be housed in a well ventilated place with neither direct nor bounced sunlight falling on it.
- The wall on which the painting is hung or stacked should not be damp. Please avoid external and bathroom walls.
- Clean the paintings regularly with soft tissue and ensure that dirt and soot is not deposited for a long time.
- Don't touch the paintings with dirty, oily hands or after eating food as it may invite fungus formation.
- Don't clean the paintings with the cloth used to clean furniture, wall or floor.
- The canvas stretchers should be adjusted accordingly to facilitate shrinkage and expansion of the canvas during change of weather.
- Periodically the paintings should be vacuum cleaned to get rid of dirt, soot, etc. especially deposited on the reverse side of painting and between canvas and stretchers.
- In case any deterioration is spotted, please contact any qualified restorer.

### CARE AND PROPER USE OF ART MATERIAL:

Art Material is essential for the artists to convert their dreams into images. The better they are cared for, the better would be the end result. Here are few tips for better care of the artists' material;

- Always squeeze the tubes from the bottom to avoid drying & wastage of colours.
- Keep the tubes properly capped after taking out the colours.
- In case of bottles and jars, don't put the brushes in the colours. It is better to take out the required amount of colours on the palette with a knife or spoon.
- Lightly rub the canvas with a fine emery paper to ensure better acceptance of colours.
- Mediums are very important for the look and life of colours. Use proper medium considering the pigment and application in mind.
- Uncontrolled turpentine can play havoc with the feel, finish and life of the oil colours, especially in earth colours hence due discretion is required using turpentine with oil colours.
- Acrylic colours are water soluble but water is not the medium for Acrylic colours. Use a proper medium considering the look and texture desired.
- Tap water should be avoided while painting with Acrylic Colours as it may be contaminated and cause issues like fungus or discoloration.
- Varnishing is helpful in preventing the pollutants affecting colours causing deterioration of the painting. However, it is very important that the painting is 100% dried before varnishing.
- Brushes are very important tools for the artist and hence must be cared well. It is better to use a proper brush washer than putting them in any jar directly.
- Kerosene should be avoided for washing brushes as it may harm the colour film.
- After initial cleaning with turpentine or water, as the case may be, it would be better to wash brushes with soap and water for through cleaning.
- Brushes must be thoroughly dried before storing in a jar or box.
- Keep some naphthalene balls in the brush jar for added protection.

# The Camel's Journey (Since 1931)

India was enveloped in the Swadeshi movement. The sentiment for using Indian made goods ran high. People were looking for modern Swadeshi (Made in India) options to foreign goods which had flooded the Indian market.

1931

Mr. D.P. Dandekar, a chemistry graduate and struggling to earn a living in the city of Mumbai (Bombay), was fired by the Swadeshi movement. He decided to plunge into manufacturing and give a home-made option to the people of India.

An absolute scarcity of resources did not make his task any easier. His first manufacturing unit came up in the living quarters of his elder brother and mentor Mr. G.P. Dandekar in Girgaum, Mumbai. The first product was Horse brand ink powder - easy to pack, and very economical too. It was a success. The success of ink powder was repeated by Camel Fountain Pen Ink, the next product in 1933.

Dandekar & Co. was rechristened as Camlin - a combination of Camel and Ink. The 'Camel' was selected as a symbol because it represents a hardy animal capable of enduring long and tough journeys across deserts. 'Camel' was also easy to write and pronounce in all Indian Languages and was acceptable to all religions of the land. Camlin soon moved into a brand new centrally located office and factory at Mahim (Mumbai).

1946

1947

Independence and the beginning of the Camel era. From inks, the product range expanded to pain balms, chalks, rubber stamp pads, gums, adhesives and a range of stationery products. Simultaneously, a distribution network was being set up to reach across the length and breadth of the country.

1958

Silver jubilee year. Celebrated with great enthusiasm in its own factory and office at Andheri, (the most industrialised suburb of Mumbai), which is now the Head Office for all divisions.

1962

Camlin entered the art material market with the launch of quality products for professionals and students such as oil colours, water colours, poster colours, wax crayons, oil pastels and geometry box.

1964

Formal inauguration of the Art Material-Division. Camlin soon became a market leader in India in stationery and art material, a position enjoyed even today. Excellent product quality, extensive network and innovative marketing techniques like participation in exhibitions, conducting contests and workshops for children, hobby painters and professionals have popularised these products that have made Camlin a respected household name.

1974

Consequent to the decision to look beyond the frontiers of India, manufacturing and marketing operations began in Malaysia in collaboration with the State Government 'Negari Sembilan'.

As per the agreement, the manufacturing plant was handed over to the local partners after a stipulated period.

1984

A year of diversification. The Camlin Fine Chemical & Pharmaceutical Division was born. A new integrated ultra-modern plant was started in the Tarapur premises to manufacture bulk drugs and anti-oxidants for the global market.

This period also saw the introduction of wooden pencils. A fully integrated factory was started in Tarapur (100 Kms from Mumbai) for manufacturing wooden pencils.

1987

Camlin became a Public Limited Company and was listed on the Bombay Stock Exchange.

1989

Technical collaboration was done with Pilot Corporation, Japan to manufacture 0.5 mm high polymer leads.

1994

The opening of Nashik factory for manufacture of pharmaceutical formulation which has been operating successfully since then.

**1995** Camlin Industrial Adhesives Division started its operations.

All-India Camel Colour Contest, the most popular child art contest for school children blazed new trails; with a staggering 3 million entries received for the contest. Camel Art Foundation, a platform for artists and students to display their talent was launched.

**1998**

**1997**

Restructuring the organization to meet the challenges of the millennium.

**1999**

Launch of Artica, the water mixable oil colours for the first time in Asia. Glass colours introduced in the hobby range. Entry of All-India Camel Colour Contest in the Limca Book of Records, for the highest number of entries received.

**2000**

The new millennium is witness to the launch of a new range of glue, erasers and range of writing instruments. Camlin products enter the international markets of the United States of America and South America.

**2001**

The first Art Teacher's Art Exhibition is held in recognition of the unique role teachers play in nurturing creativity in children, a state-of-the-art gel pen plant begins operations in Mumbai.

**2002**

Camlin is recognised as an Export House by the Ministry of Commerce, Govt. of India for its outstanding export performance.

A tour to Europe and visits to famous art galleries is organised by Camel Art Foundation for the selected winners of the Camel Regional Art Contest and the Art Teacher's Art Exhibition.

The year also saw Camlin Fine Chemical Division being awarded the prestigious ISO certification.

**2003**

Camlin launched specialty ink group to engage the R & D expertise in ink development and manufacturing.

**2004**

Launched Camlin Exam brand, the premium quality stationery products.

**2005**

Camlin introduced new, state-of-the-art plastic body range.

**2008**

Camlin Ltd. listed in National Stock Exchange

**2009**

Camlin opened its first module pre-school in Mumbai, Camlin Alphakids Ltd, which is a 100% subsidiary of the company.

**2011**

All India Camel Colour Contest entered the Guinness World Records as the Largest Art Competition with the participation of 48.5 lakh students from all across the country.

**2012**

Kokuyo S & T Ltd. Japan acquired a majority stake in Camlin Ltd. and rechristened the company as Kokuyo Camlin Limited. Kokuyo is a Japan based company with more than a 100-year-old history. It is a leading marketer in stationery, institutional furniture and catalogue sales and has a presence in many countries in Asia. Going forward as the two legacies and leaders come together, their synergy will lead to more strength and more success.



## COLOURS

### Oil Colours

- Artists' Oil Colour
- Students' Oil Colours

### Artists' Acrylic Colours

### Water Colours

- Artists' Water Colour Tubes
- Artists' Water Colour Cakes

### Water Colour Pencils

### Premium Poster Colours

### Drawing Pencils

### Charcoal

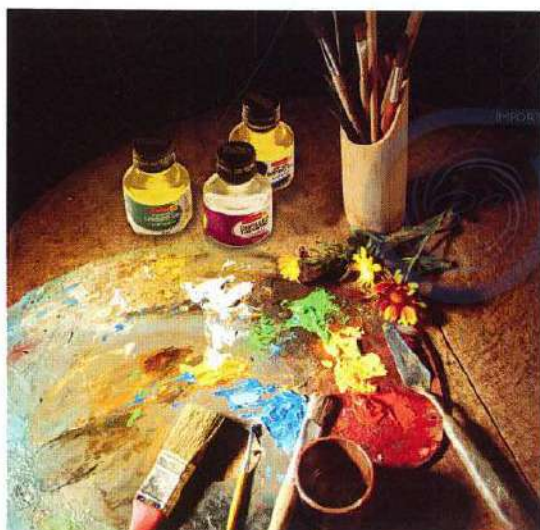
### Soft Pastels

### Art Powder Colours

### Coloured Drawing Inks

### Transparent Photo Colours

### Designer's Indian Inks



## PAINTING MEDIUMS

- Purified Linseed Oil
- Artists' Drying Oil
- Camli-Gel
- Distilled Turpentine
- Texture White
- Gesso
- Picture Varnish Spray
- Picture Varnish
- Fixative Spray
- Acrylic Gel Medium
- Acrylic Gloss Medium
- Acrylic Matte Medium
- Acrylic Retarder

## CANVAS & EASELS

- Basic Studio Easel
- Folding Studio Easel
- Standing Studio Easel
- Table Easel
- Tripod Sketch Easel
- Pre-Stretched Canvas
- Canvas Boards
- Canvas Rolls

## TOOLS

- Brushes
- Synthetic Gold Hair Brushes (Series 66) (Round)
- Synthetic Gold Hair Brushes (Series 67) (Flat)
- Hog Hair Brushes (Series 56) (Flat)
- Hog Hair Brushes (Series 56) (Fan)
- Hog Hair Wash Brushes (Series 58)



# CONTENTS

## PALETTES

- Large Rectangular Palette
- Oil Palette with 2 Dipper (Rectangle)
- Oil Palette with 2 Dipper (Oval)
- Folding Palettes (Air Tight)
- Tear-off Palette

## ACCESORIES

- Blending Stamps



## HOBBY & SCHOOL RANGE

### Fabrica Acrylic Colours

- Fabrica Acrylic Colours
- Fabrica Acrylic Colours-Ultra Range
- Fabrica Acrylic Colours-Pearl Range
- Fabrica Acrylic Colours-Metallic Range

### Fabrica Cone Liners

### Fabrica 3-D Glitters

### Glass Colours & Liners

- Glass Colours (Water Based)
- Glass Colours (Solvent Based)
- Glass Liners

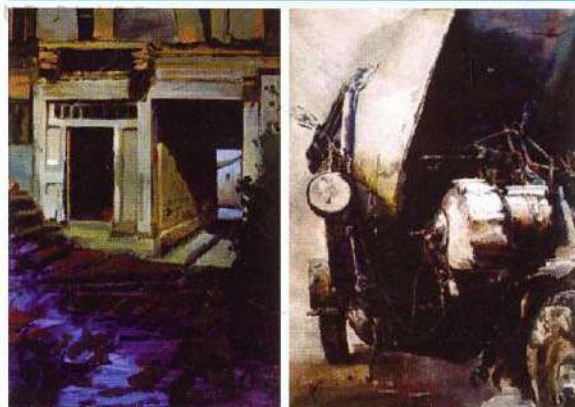
### Hobby Range

- Sparkle Colours
- Medium No 1 & 2
- Puffy Medium
- Fabrica Glue

### Specialty Brushes



## CAMEL ART FOUNDATION





#### WELCOME TO KOKUYO CAMLIN LIMITED

#### KOKUYO GROUP

Kokuyo Group is over a century old Japanese business house founded in 1905 in Osaka, Japan. Starting as book cover makers for "Wacho" (traditional Japanese account books), Kokuyo today is a ₹17,600 Cr. group with business spread all over Asia, Europe, and with offices in China, Hong Kong, Thailand, Singapore, Malaysia and Vietnam.

The main product lines include office stationery, especially notebooks, office supplies and office furniture. The company is officially listed in Osaka & Tokyo stock exchanges. The company's flagship brand is Kokuyo which is a household name in office stationery products and furniture in Japan.

#### CAMLIN LIMITED THE WORLD AT ONE PLACE

Like Kokuyo Group, Camlin too has been in existence for more than 83 years and has a rich legacy and proud history of its operations. Way back in 1931, it started manufacturing Horse brand ink powders and tablets followed by Camel Inks which eventually lead to the creation of its flagship brand Camlin in 1946. Over the years, Camlin has expanded into art material, scholastic materials, hobby products, office stationery products, and corporate gifts, Camlin is one of the most trusted and renowned brands in India with over 2100 products and a reach of over 5.5 crore households.

#### KOKUYO CAMLIN LIMITED

Synergy Strength Success.

In May 2011, Kokuyo and Camlin came together to create Kokuyo Camlin Ltd, Kokuyo S&T Company Ltd. a wholly owned subsidiary of Kokuyo Ltd, acquired a controlling stake in Camlin Limited from the promoters. The name of the company has now been changed to Kokuyo Camlin Ltd.

With a sharp focus and a clear goal to leverage existing strength and presence, Kokuyo Camlin Ltd is all set to begin a new chapter in the stationery business. The expertise, reach and brand equity of Camlin will be supplemented with Kokuyo's innovative new office stationery products, world-class R&D and strong presence in Asian geographies.

Going forward, as the two legacies and leaders come together, their synergy will lead to more strength and more success.

アジアの誉



# Colours



# Artists' Oil Colours



Camel Artists' Oil Colours are reputed for purity, quality and reliability. They contain the maximum pigment content, microscopically ground and combined with non-yellowing oils and a unique plasticizer to give a smooth, non-cracking film with brush or knife on canvas. They are available in 67 brilliant shades. All shades are available in 20 ml, 60 ml and 120 ml tubes.

### Product No. Description

- 0105701300 Pack of 12 assorted colours marked\* in 9 ml tubes (20-M-12)
- 0111702775 Pack of 12 assorted colours marked\* in 20 ml tubes (20-L-12)

### Product No. Quantity Multiple Order Quantity

Product No.	Quantity	Multiple Order Quantity
0111***	20 ml	5 Tubes <i>51-95, 100, 105, 110</i>
0119***	60 ml	2 Tubes
0125***	120 ml	1 Tube

(Above stars (\*\*\*) besides product numbers are to be replaced with shades numbers while placing an order)

 236 Lemon Yellow* (221) Series 3 (B) <input checked="" type="checkbox"/>	 038 Cadmium Lemon (226) Series 4 (B) <input checked="" type="checkbox"/>	 081 Chrome Lemon Hue (228) Series 3 (B) <input type="checkbox"/>	 084 Chrome Yellow Hue (222) Series 3 (B) <input checked="" type="checkbox"/>	 047 Cadmium Yellow Deep (223) Series 4 (B) <input checked="" type="checkbox"/>	 085 Chrome Yellow Deep Hue* (227) Series 3 (B) <input checked="" type="checkbox"/>	 153 Gamboge Hue Series 2 (B) <input type="checkbox"/>
 205 Indian Yellow (229) Series 3 (B) <input type="checkbox"/>	 039 Cadmium Orange (252) Series 4 (B) <input checked="" type="checkbox"/>	 083 Chrome Orange Hue (241) Series 3 (B) <input checked="" type="checkbox"/>	 128 Flesh Tint (208) Series 3 (B) <input checked="" type="checkbox"/>	 041 Cadmium Red (250) Series 4 (B) <input checked="" type="checkbox"/>	 044 Cadmium Red Deep Series 4 (B) <input checked="" type="checkbox"/>	 394 Scarlet Lake (242) Series 2 (B) <input type="checkbox"/>
 449 Vermilion Hue* (251) Series 2 (B) <input type="checkbox"/>	 377 Rose Madder Hue (245) Series 2 (B) <input type="checkbox"/>	 063 Crimson Lake* (244) Series 2 (B) <input checked="" type="checkbox"/>	 002 Alizerine Crimson (253) Series 3 (B) <input checked="" type="checkbox"/>	 064 Crimson Deep (256) Series 4 (B) <input type="checkbox"/>	 251 Magenta (246) Series 3 (C) <input checked="" type="checkbox"/>	 255 Mauve (249) Series 3 (C) <input checked="" type="checkbox"/>
 058 Cobalt Violet (255) Series 4 (B) <input checked="" type="checkbox"/>	 071 Cerulean Blue Hue (265) Series 2 (B) <input checked="" type="checkbox"/>	 056 Cobalt Blue Hue* (266) Series 2 (B) <input checked="" type="checkbox"/>	 051 Carmi Blue (261) Series 2 (B) <input checked="" type="checkbox"/>	 436 Ultramarine Blue (264) Series 1 (B) <input type="checkbox"/>	 144 French Ultramarine (269) Series 2 (B) <input type="checkbox"/>	 351 Prussian Blue* (262) Series 2 (B) <input checked="" type="checkbox"/>

These shades are classified in three groups according to their permanence and transparency: (A) Absolutely Permanent (B) Permanent (C) Fairly Permanent  
 Opaque  Semi-transparent  Transparent  Contains Cadmium



203 Indigo (267) Series 1 (B)	425 Turquoise Blue (258) Series 3 (B)	078 Chrome Green Light Hue (232) Series 2 (B)	077 Chrome Green Deep Hue (282) Series 2 (B)	117 Emerald Green (286) Series 3 (B)	036 Cadmium Green Pale (269) Series 4 (B)	050 Camlin Green (281) Series 2 (B)
421 Terre Verte (238) Series 2 (B)	351 Sap Green* (234) Series 3 (B)	453 Viridian Hue* (285) Series 2 (B)	054 Cinnabar Green Deep Series 3 (B)	353 Prussian Green Series 2 (B)	281 Olive Green (267) Series 3 (B)	271 Naples Yellow (224) Series 3 (B)
492 Yellow Ochre* (225) Series 1 (A)	172 Gold Ochre Transparent (230) Series 3 (A)	366 Raw Sienna (230) Series 1 (A)	447 Venetian Red (254) Series 1 (A)	241 Light Red (246) Series 1 (A)	201 Indian Red (247) Series 1 (A)	031 Burnt Sienna* (204) Series 1 (A)
032 Burnt Umber (206) Series 1 (A)	367 Raw Umber (205) Series 1 (A)	446 Vandyke Brown (207) Series 1 (A)	105 Dary's Grey (213) Series 1 (B)	396 Sepia Series 2 (B)	305 Payne's Grey (214) Series 1 (B)	231 Lamp Black (211) Series 1 (A)
207 Ivory Black* (202) Series 1 (A)	126 Flake White Hue* (201) Series 1 (A)	423 Titanium White (209) Series 1 (A)	496 Zinc White (210) Series 1 (A)			
060 Copper Series 4 (B)	171 Gold Series 4 (B)	177 Gold Bronze Series 4 (B)	007 Antique Bronze Series 4 (B)	320 Pearl White Series 4 (B)	400 Silver Series 4 (B)	008 Antique Copper Series 4 (B)

These shades are only indicative and not exact due to printing limitations.

# Students' Oil Colours



Camel Students' Oil Colours are developed to provide the highest quality within moderate cost limits. They are primarily designed for use by both amateur and student artists and available in 42 shades.

Product No.	Description
0205711	Pack of 12 assorted colours marked* in 9 ml tubes (60-M-12)
0211712	Pack of 12 assorted colours marked* in 20 ml tubes (60-L-12)

All shades are available in 20 ml

Shades marked with \* are available in 120 ml.

 236 Lemon Yellow* (621) (B) ■	 081 Chrome Lemon Hue (622) (B) ■	 046 Cadmium Yellow Hue (623) (B) ■	 048 Cadmium Yellow Deep Hue* (624) (E) ■	 153 Gamboge Hue (627) (B) ■	 083 Chrome Orange Hue (652) (B) □	 040 Cadmium Orange Hue (651) (B) ■
 044 Cadmium Red Deep Hue (645) (E) ■	 394 Scarlet Lake* (641) (B) ■	 449 Vermillion Hue (642) (B) ■	 377 Rose Madder Hue (644) (B) □	 053 Carmine Hue (646) (B) □	 063 Crimson Lake* (643) (B) □	 251 Magenta Hue (649) (C) □
 255 Mauve Hue (650) (C) □	 071 Cerulean Blue Hue (664) Series 2 (B) ■	 056 Cobalt Blue Hue* (662) (B) ■	 436 Ultramarine Blue Hue (663) (B) □	 351 Prussian Blue* (661) (B) ■	 078 Chrome Green Light Hue (681) (B) ■	 077 Chrome Green Deep Hue (682) (B) ■

These shades are classified in three groups according to their permanence and transparency: (A) Absolutely Permanent (B) Permanent (C) Fairly Permanent  
■ Opaque ■ Semi-transparent □ Transparent



Product No.	Quantity	Multiple Order
-------------	----------	----------------

0211***	20 ml	5 Tubes
0225***	120 ml	1 Tube

(Above stars (\*\*\*) beside product numbers are to be replaced with shade numbers while placing an order)

 117 Emerald Green (684) (B) ■	 421 Terre Verte (685) (B) ■	 391 Sap Green** (688) (B) □	 453 Viridian Hue* (683) (B) □	 054 Cinnabar Green Deep (687) (E) ■	 353 Prussian Green (686) (E) ■	 271 Naples Yellow (625) (E) ■
 492 Yellow Ochre** (626) (A) ■	 366 Raw Sienna (605) (A) ■	 241 Light Red (647) (A) ■	 201 Indian Red (648) (A) ■	 031 Burnt Sienna* (606) (A) ■	 032 Burnt Umber (608) (A) ■	 367 Raw Umber (607) (A) ■
 446 Vandyke Brown* (609) (A) ■	 396 Sepia (610) (B) ■	 231 Lamp Black (604) (A) ■	 207 Ivory Black** (603) (A) ■	 126 Flake White Hue** (601) (A) ■	 496 Zinc White (602) (A) ■	 423 Titanium White* (A) ■

These shades are only indicative and not exact due to printing limitations.

# Artists' Acrylic Colours



Camel Artists' Acrylic Colours are soft, creamy, and are a golden mean between water colours and oil colours. They can be used directly from the tube or mixed with acrylic medium or with water. Relief texture can be obtained by application of thick paint with palette knife and large areas can be built up without fear of cracking. They adhere to a great variety of surfaces like canvas, wood and earthenware and are available in 60 shades.

Product No.	Description
0805721	Pack of 12 assorted colours marked* in 9 ml tubes (700-M-12)
0811722	Pack of 12 assorted colours marked* in 20 ml tubes (700-L-12)

All shades are available in 40 ml, 120 ml, 500 ml and 1Ltr. Jars.


These shades are classified in three groups according to their permanence and transparency: (A) Absolutely Permanent (B) Permanent (C) Fairly Permanent  
 ■ Opaque ■ Semi-transparent □ Transparent



Product No.	Quantity	Multiple Order
0815***	40 ml	3 Lami Tubes
0825***	120 ml	3 Lami Tubes
0838***	500 ml	2 Jars
0843***	1 ltr.	1 Jar

(Above stars (\*\*\*) beside product numbers are to be replaced with shade numbers while placing an order)

 427 Turquoise Green (7088) Series 1 (B) ■	 453 Viridian Hus* (7085) Series 2 (B) □	 117 Emerald Green (7086) Series 2 (B) ■	 428 Turquoise Deep Series 1 (B) ■	 026 Brilliant Yellow Green Series 2 (B) □	 036 Cadmium Green Pale Hue Series 3 (B) ■	 332 Permanent Green Light (7082) Series 2 (B) □
 331 Permanent Green Deep (7083) Series 2 (B) □	 301 Sap Green* (7084) Series 1 (B) □	 281 Olive Green (7087) Series 2 (B) ■	 192 Hockers Green Deep Series 1 (A) □	 437 Unbleached Titanium Series 1 (A) ■	 492 Yellow Ochre* (7025) Series 1 (A) □	 366 Raw Sienna (7003) Series 1 (A) □
 201 Indian Red Series 1 (A) ■	 031 Burnt Sienna* (7004) Series 1 (A) □	 357 Raw Umber (7005) Series 1 (A) ■	 032 Burnt Umber (7006) Series 1 (A) ■	 016 Black* (7002) Series 1 (A) ■	 180 Grey Series 1 (A) ■	 305 Payne's Grey Series 2 (A) ■
 423 Titanium White* (7009) Series 1 (A) ■	 495 Zinc White Series 2 (A) ■	 010 Antique Gold Series 3 (A) ■	 171 Gold Series 3 (A) □	 177 Gold Bronze Series 3 (A) ■	 320 Pearl White Series 3 (A) □	 400 Silver Series 3 (A) ■
 007 Antique Bronze Series 3 (A) ■	 063 Copper Series 3 (A) ■					

These shades are only indicative and not exact due to printing limitations.

# Artists' Water Colour Tubes



Camel Artists' Water Colours in tubes are formulated using only the finest quality ingredients to ensure maximum purity, transparency and clear tones. The even texture of colour, richness of hue, and uniformity in various tonal values are the hallmarks of Camel Artists' Water Colours. They are available in 48 shades.

## Product No. Description

1304731	Pack of 12 assorted colours in 5 ml tubes (70-S-12)*
1305732	Pack of 18 assorted colours in 9 ml tubes (70-M-18)#
1311734	Pack of 12 assorted colours in 20 ml tubes (70-L-12)^

All shades are available in 20 ml tubes.

70524-

236 Lemon Yellow#*^ (721) Series 2 (B) <input checked="" type="checkbox"/>	337 Permanent Yellow Deep (723) Series 2 (B) <input type="checkbox"/>	153 Gamboge Hue*#^ (724) Series 2 (B) <input type="checkbox"/>	205 Indian Yellow (722) Series 1 (B) <input type="checkbox"/>	283 Orange Series 2 (B) <input checked="" type="checkbox"/>	334 Permanent Orange # (741) Series 2 (B) <input checked="" type="checkbox"/>	449 Vermilion Hue # (742) Series 2 (B) <input checked="" type="checkbox"/>
394 Scarlet Lake* # (743) Series 1 (B) <input checked="" type="checkbox"/>	053 Carmine (743) Series 2 (B) <input checked="" type="checkbox"/>	377 Rose Madder Hue (744) Series 2 (B) <input type="checkbox"/>	063 Crimson Lake* #^ (745) Series 2 (B) <input type="checkbox"/>	241 Light Red # (746) Series 1 (A) <input checked="" type="checkbox"/>	251 Magenta (748) Series 2 (C) <input checked="" type="checkbox"/>	255 Mauve (749) Series 2 (C) <input checked="" type="checkbox"/>
356 Purple Series 2 (C) <input checked="" type="checkbox"/>	451 Violet Series 2 (C) <input checked="" type="checkbox"/>	071 Cerulean Blue Hue (766) Series 2 (B) <input type="checkbox"/>	056 Cobalt Blue Hue* #^ (769) Series 2 (B) <input checked="" type="checkbox"/>	051 Camlin Blue (761) Series 2 (B) <input checked="" type="checkbox"/>	330 Permanent Blue (765) Series 2 (B) <input checked="" type="checkbox"/>	436 Ultramarine Blue Series 1 (B) <input type="checkbox"/>
144 French Ultramarine ^ (764) Series 2 (B) <input type="checkbox"/>	351 Prussian Blue* #^ (762) Series 1 (B) <input checked="" type="checkbox"/>	203 Indigo (767) Series 1 (B) <input checked="" type="checkbox"/>	084 Chrome Yellow Hue Series 2 (B) <input type="checkbox"/>	078 Chrome Green Light Hue Series 2 (B) <input checked="" type="checkbox"/>	332 Permanent Green Light (782) Series 2 (B) <input checked="" type="checkbox"/>	117 Emerald Green # (783) Series 2 (B) <input checked="" type="checkbox"/>

These shades are classified in three groups according to their permanence and transparency: (A) Absolutely Permanent (B) Permanent (C) Fairly Permanent

■ Opaque  Semi-transparent  Transparent



Product No.	Quantity	Multiple Order
-------------	----------	----------------

1311***	20 ml	5 Tubes
---------	-------	---------

(Above stars (\*\*\*) beside product numbers are to be replaced with shades numbers while placing an order)

050 Camlin Green (781) Series 2 (B) <input checked="" type="checkbox"/>	421 Terre Verte (789) Series 1 (B) <input checked="" type="checkbox"/>	391 Sap Green* # ^ (785) Series 2 (B) <input checked="" type="checkbox"/>	453 Viridian Hue* # ^ (784) Series 2 (B) <input checked="" type="checkbox"/>	281 Olive Green (786) Series 1 (B) <input checked="" type="checkbox"/>	193 Hooker's Green Light (787) Series 1 (B) <input checked="" type="checkbox"/>	191 Hooker's Green Series 1 (B) <input checked="" type="checkbox"/>
192 Hookers Green Deep (788) Series 1 (B) <input checked="" type="checkbox"/>	271 Naples Yellow (726) Series 1 (B) <input checked="" type="checkbox"/>	492 Yellow Ochre* # ^ (725) Series 1 (A) <input checked="" type="checkbox"/>	366 Raw Sienna# (725) Series 1 (A) <input checked="" type="checkbox"/>	201 Indian Red# (747) Series 1 (A) <input checked="" type="checkbox"/>	031 Burnt Sienna* # ^ (707) Series 1 (A) <input checked="" type="checkbox"/>	032 Burnt Umber# ^ (79) Series 1 (A) <input checked="" type="checkbox"/>
396 Sepia (705) Series 1 (A) <input checked="" type="checkbox"/>	305 Payne's Grey (704) Series 1 (B) <input checked="" type="checkbox"/>	231 Lamp Black (73) Series 1 (A) <input checked="" type="checkbox"/>	207 Ivory Black* # ^ (702) Series 1 (A) <input checked="" type="checkbox"/>	075 Chinese White# (701) Series 1 (A) <input checked="" type="checkbox"/>	367 Raw Umber# (708) Series 1 (A) <input checked="" type="checkbox"/>	

These shades are only indicative and not exact due to printing limitations.

# Artists' Water Colour Cakes



Camel Artists' Water colours in cake form have all the qualities of a superior water colour. They are manufactured under modern processes using good quality pigments which impart maximum degree of light-fastness, transparency and clear tones to the painting. They are available in 18 shades.

Product No.	Description
-------------	-------------

1010736	Pack of 18 assorted colours in a colourful tin box with Camlin Synthetic Hair Brush (300-C-18)
---------	--

300C-24

236 Lemon Yellow	153 Gamboge Hue	289 Orange	393 Scarlet	092 Crimson	071 Cerulean Blue Hue	056 Cobalt Blue Hue
436 Ultramarine Blue	117 Emerald Green	391 Sap Green	453 Viridian Hue	492 Yellow Ochre	241 Light Red	031 Burnt Sienna
082 Burnt Umber	387 Raw Umber	015 Black	478 White			

*These shades are only indicative and not exact due to printing limitations.*

# Water Colour Pencils



Versatile product that can be used as dry-blend or as water colour. They are pre-sharpened, ready to use, and have light-fastness and colour brilliance.

Product No.	Description
4294573	Water Colour Pencils 12 Shades - Full Size (Hexagonal)
4294576	Water Colour Pencils 24 Shades - Full Size (Hexagonal)



*These shades are only indicative and not exact due to printing limitations.*

# Premium Poster Colours



The premium range of Camel Premium Poster Colours are ideal for a smooth matt finish and a completely opaque mass tone. Made from the finest pigments, they give high covering capacity with a brush or a spray gun. They flow easily, evenly dry, quickly and are easy to mix. Camel Fluorescent Poster Colours give brighter artworks and superior visual impact. These must be carefully used as they are moderately permanent and lose their brilliance on intermixing. Camel Premium Poster Colours are available in 54 shades.

Product No.	Description
1406740	Pack of 6 assorted colours in 10 ml bottles #
1406741	Pack of 12 assorted colours in 10 ml bottles *
1409741	Pack of 12 assorted colours in 15 ml bottles*
1413741	Pack of 12 assorted colours in 30 ml bottles*

236 Lemon Yellow*# (121) Series 1	081 Chrome Lemon Hue (125) -Series 1	086 Chrome Yellow Medium Hue* (123) - Series 1	085 Chrome Yellow Deep Hue (122) - Series 1	283 Orange (143) Series 1	285 Orange Red (151) Series 1	128 Flesh Tint (111) Series 1
449 Vermilion Hue* (142) Series 1	347 Poster Red*# (149) Series 1	393 Scarlet (141) Series 1	053 Carmine (151) Series 1	062 Crimson (144) Series 1	341 Pink (145) Series 2	406 Special Pink (145A) Series 2
251 Magenta (150) Series 2	235 Mauve (149) Series 2	451 Violet (148) Series 2	404 Sky Blue (177) Series 1	071 Cerulean Blue Hue (170) - Series 1	056 Cobalt Blue Hue*# (102) Series 1	307 Peacock Blue (150) Series 1
051 Camlin Blue (174) Series 1	436 Ultramarine Blue (164) Series 1	351 Prussian Blue* (161) Series 1	425 Turquoise Blue (163) Series 1	240 Light Green* (165) Series 1	233 Leaf Green (171) Series 2	257 Medium Green (166) Series 2

These shades are only indicative and not exact due to printing limitations.



Product No.	Quantity	Multiple Order
1409***	15 ml	15 bottles
1423***	100 ml	5 bottles
2438***	500 ml	2 bottles

(Above stars (\*\*\*) besides product numbers are to be replaced with shades numbers while placing an order)

117 Emerald Green (168) Series 1	345 Poster Green* # (169) Series 1	281 Olive Green (176) Series 1	108 Deep Green (157) Series 1	102 Dark Green (172) Series 1	427 Turquoise Green (173) Series 1	050 Camlin Green (175) Series 1
492 Yellow Ochre* (124) Series 1	366 Raw Sienna (109) Series 1	201 Indian Red (147) Series 1	031 Bunt Sienna* (103) Series 1	032 Burnt Umber (104) Series 1	446 Vandyke Brown (105) Series 1	344 Poster Black* # (102) Series 1
346 Poster Grey (106) Series 1	348 Poster White (101) Series 2	410 Super White* # (112) Series 3	400 Silver (108) Series 2	171 Gold (107) Series 2	130 Fluorescent Yellow (139) Series 4	135 Fluorescent Orange (135) - Series 4
131 Fluorescent Red (134) Series 4	133 Fluorescent Pink (136) Series 4	134 Fluorescent Blue (104) Series 4	133 Fluorescent Green (133) - Series 4			

# Drawing Pencils



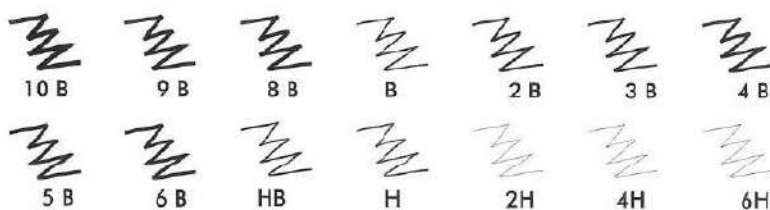
Camlin Drawing Pencils are the most ideal drawing pencils for architects, engineers, artists, draftsmen and students. They possess all the qualities of a good drawing pencil and gives you uniform dense lines. The leads are tough and do not wear out fast. Leads in Camlin Drawing Pencils are well compressed and made of high graphite content. They also

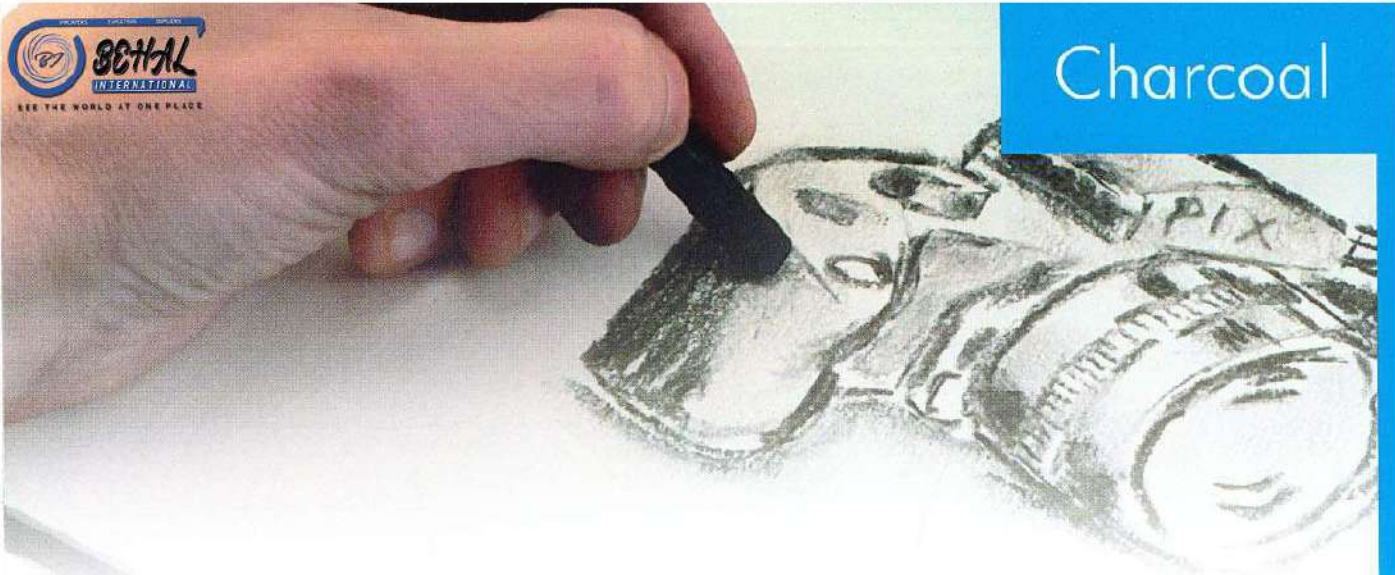
possess good quality in reproducibility that can give you blueprints and photocopies.

They are available in 14 accurately graded degrees from 6H to 10B in boxes of 10 pencils and assorted pack of 6 pencils of different B grades.

H-Hard, B-Black, HB-Hard and Black i.e. medium.

Product Code	Description	Product Code	Description
7081080	New Drawing Pencil 10B	7089080	New Drawing Pencil 6B
7082080	New Drawing Pencil 9B	7090080	New Drawing Pencil HB
7083080	New Drawing Pencil 8B	7091080	New Drawing Pencil H
7084080	New Drawing Pencil B	7092080	New Drawing Pencil 2H
7085080	New Drawing Pencil 2B	7094080	New Drawing Pencil 4H
7086080	New Drawing Pencil 3B	7096080	New Drawing Pencil 6H
7087080	New Drawing Pencil 4B	7000953	Drawing Pencil Pack-6 (Trial Pack)
7088080	New Drawing Pencil 5B		





### COMPRESSED CHARCOAL

Camel Compressed Charcoal is a new age affordable solution for the sketching needs of an artist. Suitable to be used on canvas as well as paper, the compressed charcoal is made out of synthetic charcoal. Fashioned like a 90 mm long chalk with a 12 mm diameter, it comes with individual shrink-wrapping for convenience and protection.

Product No.	Description
0500917	Pack of 20 Sticks of Charcoal

### CHARCOAL PENCILS

Camlin Charcoal Pencils are artist quality, pure-powdered charcoal blend cores. These pencils offer rich black tone. Camlin Charcoal Pencils are available in 3 grades – Hard, Medium and Soft.

Product No.	Description
7080081	Charcoal Pencil - Soft (Pack of 10 pencils)
7079081	Charcoal Pencil - Medium (Pack of 10 pencils)
7000954	Charcoal Assorted Pencil (Pack of 3 pencils - one each of Soft, Medium, and Hard grade)



### CAMEL FINE NATURAL CHARCOAL FOR ARTISTS'

Camel Fine Charcoal are prepared for artists' use, the wood is correctly charred to produce a line of consistent intensity.

Product No.	Description
0500916	Pack of 20 sticks – 10 g

# Soft Pastels



A set of 20 brilliant shades giving delicate soft effects. The square shape is very convenient to hold and easy to use. Comparable to most of the international brands, this soft pastel is suitable for drawing as well as painting-type rendering.

Product No.	Description
0337707	Pack of 20 assorted colours



*These shades are only indicative and not exact due to printing limitations.*

# Art Powder Colours



SEE THE WORLD AT ONE PLACE

Economical and ideal for posters, signboards, children's work, experience camps and painting workshops where moderate durability is expected. By adding Camel Medium No. 1, the durability can be enhanced. They are available in 27 brilliant shades.

Product No.	Description
-------------	-------------

1258***	Single colour in 150 g / 275 ml pet bottle
---------	--

(Above stars (\*\*\*) are to be replaced with shade number)



These shades are only indicative and not exact due to printing limitations.

# Coloured Drawing Inks



Camel Coloured Drawing Inks are transparent and flow easily from the brush. The inks are based on dyes chosen for their brilliance except black and white which are based on light fast pigments. They have a high colour strength and are transparent, and can be intermixed with one another or diluted with water. Ideal for line drawing, studio illustrations, visualisation, fashion drawing or interior and architectural work, they are available in 16 shades.

Product Code	Description
--------------	-------------

1111754	Pack of 12 assorted colours in 20 ml bottles (07-T-12)
---------	--

Product No.	Quantity	Multiple Order Quantity
-------------	----------	-------------------------

1111***	20 ml	10 Bottles
---------	-------	------------

(Above stars (\*\*\*) beside product numbers are to be replaced with shades numbers while placing an order)



*These shades are only indicative and not exact due to printing limitations.*

# Transparent Photo Colours



SEE THE WORLD AT ONE PLACE

Camel Transparent Photo Colours are based on dyes. They are highly transparent, easy-to-use and may be mixed with one another in any proportion to create the required shades. They are ideal for colouring black and white photographs, slides and touching up of coloured photographs. They are available in 12 brilliant shades.

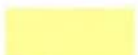
Product No	Description
------------	-------------

121175	Pack of 12 assorted colours in 20 ml With dropper (200 - T - 12)
--------	---

Product No.	Quantity	Multiple Order
-------------	----------	----------------

1211***	20 ml	10 Bottles
---------	-------	------------

(Above stars (\*\*\*) beside product numbers are to be replaced with shades numbers while placing an order)



243 Light Yellow (2011)



110 Deep Yellow (2012)



128 Flesh Tint (2008)



393 Scarlet (2021)



062 Crimson (2022)



451 Violet (2023)



239 Light Blue (2001)



100 Dark Blue (2032)



143 Foliage Green (2041)



102 Dark Green (2042)



476 Warm Brown (2002)



408 Stone Grey (2001)

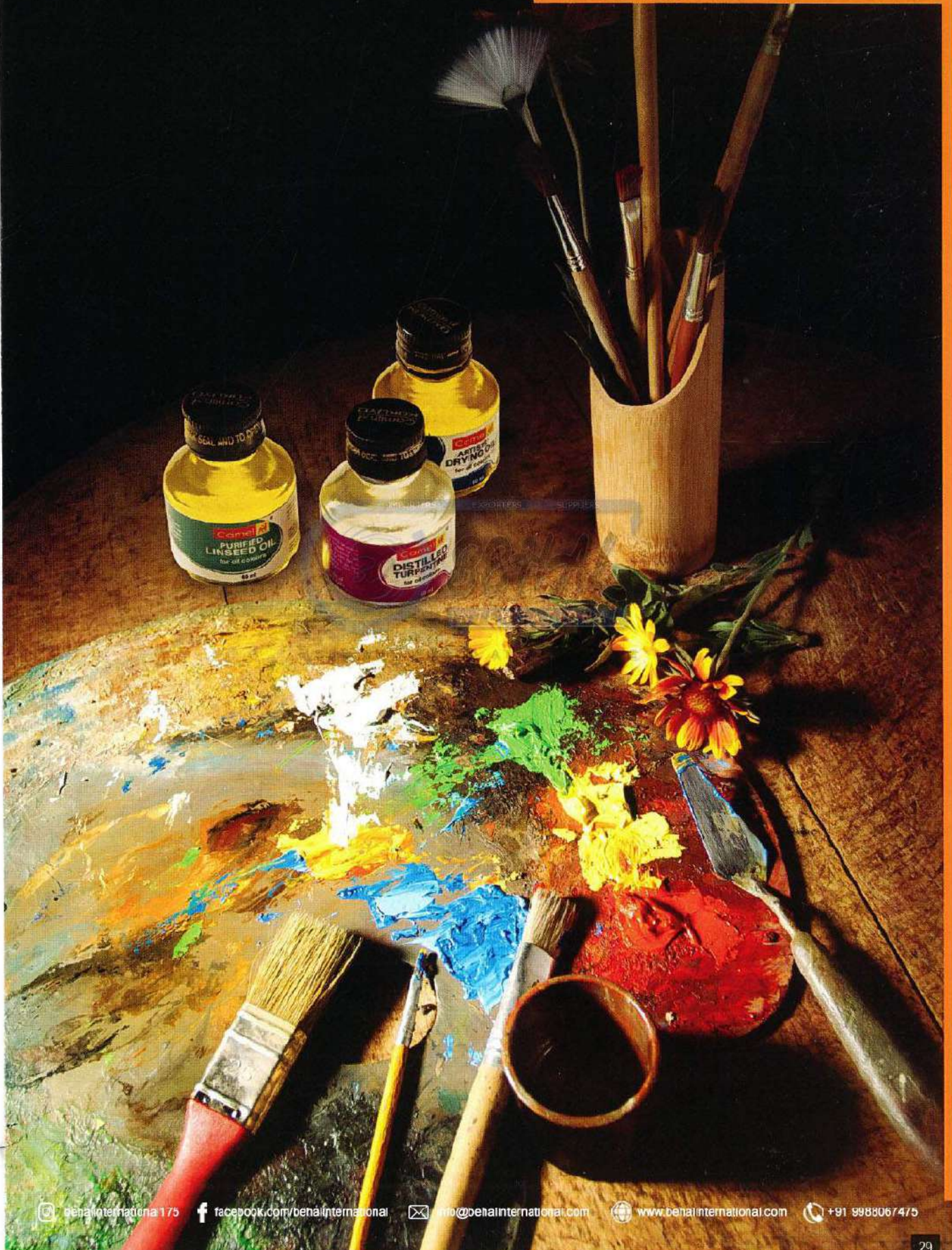
These shades are only indicative and not exact due to printing limitations.

# Designer's Indian Inks (Permanent)



Camel Designers' Waterproof Drawing Ink is available in black for specific surfaces.

Product Code	Description
1111759	<p><b>Special Waterproof Drawing Ink (Black-99)</b></p> <p>Suitable for all papers, cards and drawing papers. Free flowing, safe for use in bow pens and croquill.</p> <p>Available in 20 ml glass bottle.</p>
1111760	<p><b>Fount Drawing Ink (Black-100)</b></p> <p>A pigment based, dense jet black ink. Suitable for medium and broad tip fountain pens. Ideal for drawing illustrations, calligraphy and writing.</p> <p>Available in 20 ml glass bottle.</p>



# Painting Medium



Colours are required to be thinned to the desired viscosity. An artist has to use a medium enhancing the binding power of the colours, without affecting the brilliance.

## MEDIA TO BE USED DURING PAINTING

### CAMEL PURIFIED LINSEED OIL

Camel Purified Linseed Oil is a suitable medium for oil painting. It is doubly-refined to remove all wax impurities to produce a very clear liquid, which does not react with or change the shades of the colour used. It adds flexibility to the oil colours.

Product No.	Description
0519901	60 ml bottle
0538901	500 ml bottle



### CAMEL ARTISTS' DRYING OIL

Camel Artists Drying Oil is linseed oil treated with scientifically developed drier to shorten the drying time. It is fully compatible with other oils.

Product No.	Description
0519904	60 ml bottle
0538904	500 ml bottle



### CAMLI – GEL

Camli – Gel, when mixed with an oil colour renders a non – chalky fresh effect on the painting by increasing the gloss and transparency of oil colours. It improves weather resistance, accelerates drying and prevents uncontrolled running of colours.

Product No.	Description
0523905	100 ml jar





### CAMEL DISTILLED TURPENTINE

Camel Distilled Turpentine is an organic solvent, specially re-distilled and treated to quicken drying of oil colours. It is a thinner for oil colours and is also useful as a cleansing agent for brushes.



Product No.	Description
0519909	60 ml bottle
0538909	500 ml bottle

### MEDIA FOR PREPARATION OF PAINTING

#### CAMEL TEXTURE WHITE

Camel Texture White is a multipurpose resin impasto medium, good for relief work or collages on canvas and wood. As it dries quickly and does not peel off, it serves the dual purpose of padding and lining.



Product No.	Description
0523915	100 ml bottle
0538915	500 ml bottle
0543915	1 litre jar

#### CAMEL GESSO

Camel Gesso is an ideal primer to prepare a wide range of surfaces like fabric, wood, board etc. for oil and acrylic painting. It is fast drying and opaque. It provides non-porous, non-flaking stretchable ground for paints.

Product No.	Description
0538945	500 ml bottle
0543945	1 litre jar

### MEDIA FOR PROTECTION OF PAINTING

#### CAMEL PICTURE VARNISH SPRAY

A protection solution for the artist of today. Camel Picture Varnish Spray offers the safety of the painting with a lot more convenience. Made in India for the first time, the Picture Varnish in a spray container is economical too. This varnish could be applied on both oil as well as acrylic paintings. Use the varnish spray holding it at a suitable distance from the paintings after they are completely dry.



Product No.	Description
530913	200 ml Aerosol Tin Spray

# Painting Medium

## CAMEL PICTURE VARNISH

Camel Picture Varnish is a post painting coat for oil paintings. After allowing the oil painting to dry for 6 to 12 months (depending on the temperature and weather condition), a coat of picture varnish will not only protect the painting but also impart a gloss to it.



Product No.	Description
0519910	60 ml bottle
0538910	500 ml bottle



## CAMEL FIXATIVE SPRAY

Camel Fixative Spray is a much-needed protection solution for all the dry drawing media. Suitable for a variety of media like soft / dry pastels, charcoal, oil pastels, pencils, crayons, etc. The Camel Fixative will form a transparent non-removable protective film on the surface after drying.

Product No.	Description
0530933	200 ml Aerosol Tin Spray

## CAMEL ARTISTS ACRYLIC MEDIA

### CAMEL ACRYLIC GEL MEDIUM

A translucent paste for impasto, glazing and texturing. Dries quickly to a water resistant finish. Increases transparency and gloss.



Product No.	Description
0523920	100 ml bottle

### CAMEL ACRYLIC GLOSS MEDIUM

A slow drying, thinning medium for Acrylic colours. Increases gloss, flow, and transparency.



Product No.	Description
0523922	100 ml bottle (Pack of 5 bottles)
0538922	500 ml bottle

### CAMEL ACRYLIC MATT MEDIUM

Quick drying thinning medium. Gives matt finish.



Product No.	Description
0523923	100 ml bottle (Pack of 5 bottles)
0538923	500 ml bottle

### CAMEL ACRYLIC RETARDER

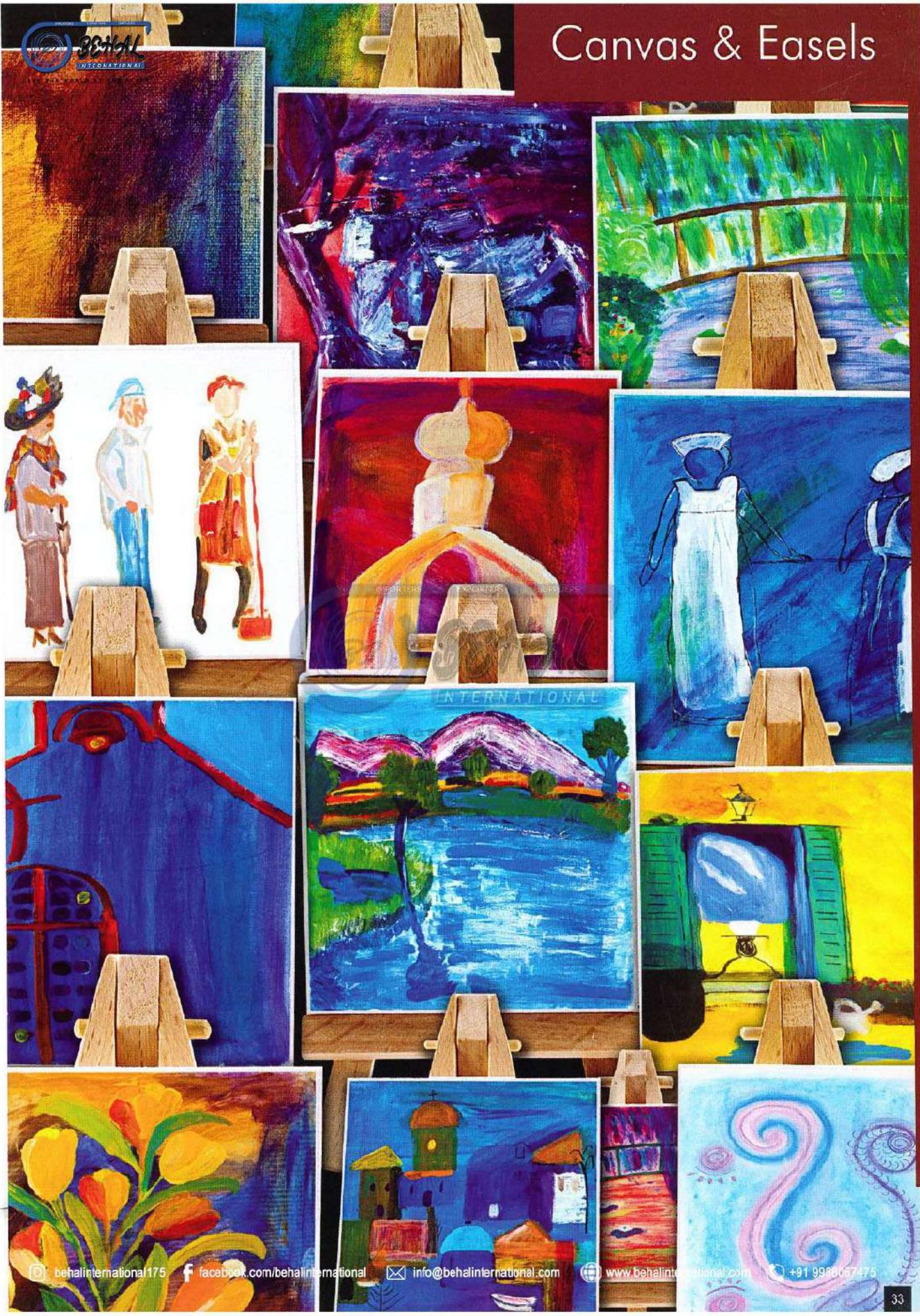
It retards drying time of acrylic colours. Does not change consistency or texture of colour and increases transparency.



Product No.	Description
0523921	100 ml bottle (Pack of 5 bottles)



# Canvas & Easels



# Easels



IMPORTERS EXPORTERS SUPPLIERS



Camel Easels are made out of the best quality wood from renewable sources and hence are eco-friendly. To ensure the stability, the wood is seasoned by the process of kiln drying. With innovative designs, these easels provide a stable support for painting. The small, but versatile range, offers solution to a wide range of support requirements of the artists. These premium easels are made of bamboo, hence are eco-friendly as well as superior on weight, finish, stability and life. These easels are presented in various designs to suit various needs of the artists. Metal easels are used by the artists in an outdoor setup, as these easels are durable and lightweight.

**Tripod Sketch Easel**  
Steam Beechwood  
Foldable, Lightweight & Stable  
Size :3' Folded & 6' Open  
Accommodates up to 30" Canvas





**Standing Studio Easel (Small)**  
 Steam Beechwood  
 Collapsible Easy Fold  
 Size : 3' Height  
 Accommodates up to 40" Canvas



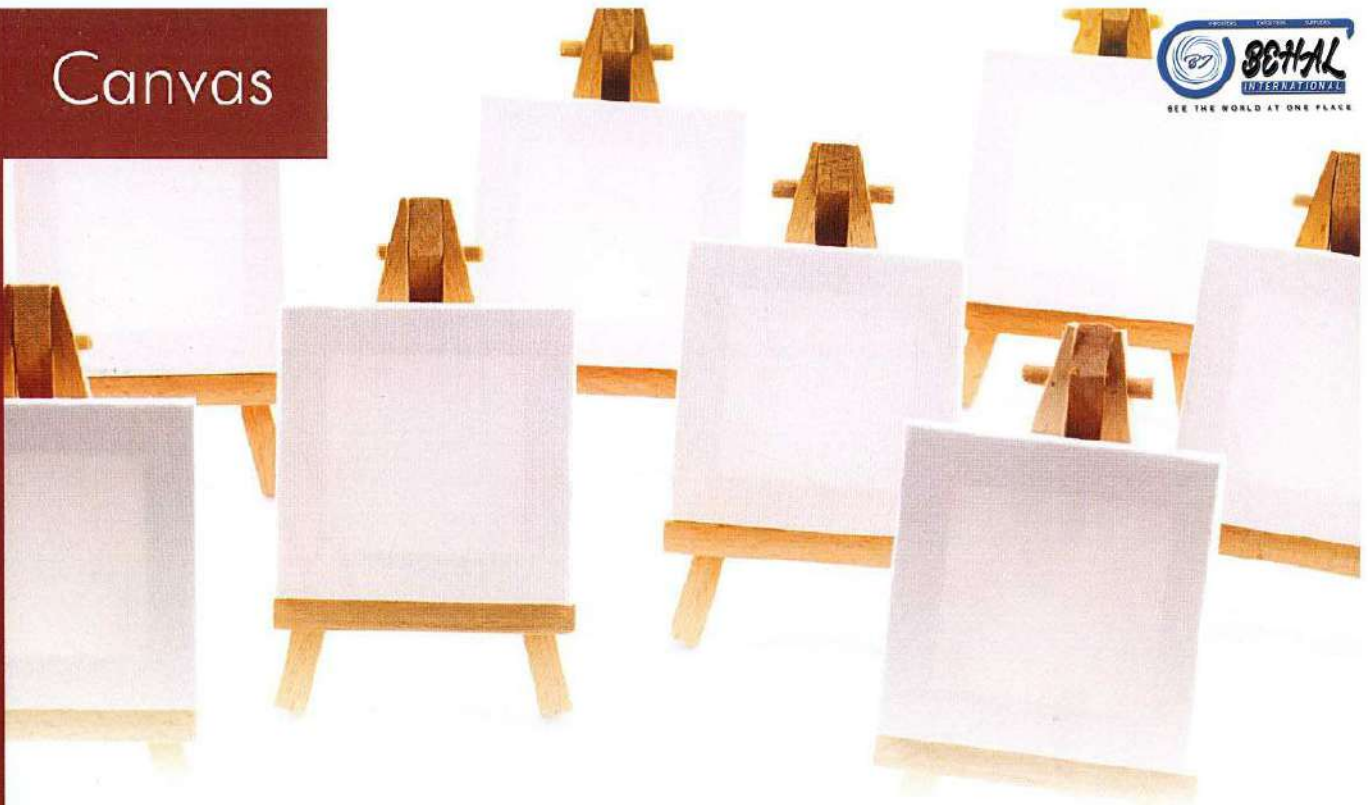
**Folding Studio Easel**  
 Steam Beechwood  
 Accordion Folding  
 Size : 5' Height  
 Accommodates up to 36" Canvas



**Table Easel**  
 Steam Beechwood  
 Table Top Use  
 Strong & Durable  
 Size : 3.5' Folded & 4.5' Open  
 Accommodates up to 16" Canvas

Product Code	Description
0601664	Tripod Sketch Easel
0601667	Standing Studio Easel (Small)
0601669	Folding Studio Easel
0601670	Table Easel

# Canvas



IMPORTERS EXPORTERS SUPPLIERS

The quality of canvas is as important as the quality of colours in a painting. So, the utmost care is taken in the manufacture of Camel Canvases. Using specially produced superior quality cotton and poly-cotton fabrics, they are coated with a resin emulsion to prevent absorption of colours. Camel Canvases are available in rolls or pasted on hard boards or stretched on wooden frames.

**BEHAL**  
INTERNATIONAL

SEE THE WORLD AT ONE PLACE

## CAMEL PRE-STRETCHED CANVAS

Product No.	Description
2205108	Stretch Canvas 20 X 25 cm (8 X 10 in)
2205110	Stretch Canvas 25 X 30 cm (10 X 12 in)
2205114	Stretch Canvas 30 X 40 cm (12 X 16 in)
2205116	Stretch Canvas 35 X 45 cm (14 X 18 in)
2205120	Stretch Canvas 40 X 50 cm (16 X 20 in)
2205123	Stretch Canvas 50 X 50 cm (20 X 20 in)
2205127	Stretch Canvas 60 X 60 cm (24 X 24 in)
2205128	Stretch Canvas 45 X 60 cm (18 X 24 in)
2205130	Stretch Canvas 50 X 60 cm (20 X 24 in)
2205134	Stretch Canvas 50 X 75 cm (20 X 30 in)
2205136	Stretch Canvas 60 X 75 cm (24 X 30 in)
2205138	Stretch Canvas 60 X 90 cm (24 X 36 in)
2205144	Stretch Canvas 75 X 100 cm (30 X 40 in)
2205146	Stretch Canvas 90 X 120 cm (36 X 48 in)



## CAMEL CANVAS ROLLS

Product No.	Description
<b>MEDIUM GRAIN</b>	
2225831	Cotton Canvas Roll MG-71 cm X 5 m (28 in)
2225832	Cotton Canvas Roll MG-91 cm X 5 m (36 in)
2225829	Cotton Canvas Roll MG-106cm X 5 m (42 in)
2225833	Cotton Canvas Roll MG-121 cm X 5 m (48 in)
2225830	Cotton Canvas Roll MG-132 cm X 5m (52 in)
2225835	Cotton Canvas Roll MG-152 cm X 5 m (60 in)
2225836	Cotton Canvas Roll MG-182 cm X 5 m (72 in)
2225837	Cotton Canvas Roll MG-213 cm X 5 m (84 in)
<b>FINE GRAIN</b>	
2226831	Cotton Canvas Roll FG-71 cm X 5 m (28 in)
2226832	Cotton Canvas Roll FG-91 cm X 5 m (36 in)
2226829	Cotton Canvas Roll FG-106 cm X 5 m (42 in)
2226833	Cotton Canvas Roll FG-121 cm X 5 m (48 in)
2226830	Cotton Canvas Roll FG-132 cm X 5 m (52 in)
2226835	Cotton Canvas Roll FG-152 cm X 5 m (60 in)
2226836	Cotton Canvas Roll FG-182 cm X 5 m (72 in)
2226837	Cotton Canvas Roll FG-213 cm X 5 m (84 in)



## CAMEL CANVAS BOARDS

Product No.	Description	Product No.	Description
2235801	Canvas Board 20 X 25 cm (8 X 10 in)	2235813	Canvas Board 60 X 75 cm (24 X 30 in)
2235802	Canvas Board 25 X 30 cm (10 X 12 in)	2235814	Canvas Board 60 X 90 cm (24 X 36 in)
2235803	Canvas Board 30 X 40 cm (12 X 16 in)	2235815	Canvas Board 75 X 90 cm (30 X 36 in)
2235804	Canvas Board 35 X 45 cm (14 X 18 in)	2235816	Canvas Board 90 X 90 cm (36 X 36 in)
2235805	Canvas Board 40 X 50 cm (16 X 20 in)	2235824	Canvas Board 20 X 20 cm (8 X 8 in)
2235806	Canvas Board 37.5 X 55 cm (15 X 22 in)	2235831	Canvas Board 30 X 30 cm (12 X 12 in)
2235807	Canvas Board 40 X 60 cm (16 X 24 in)	2235832	Canvas Board 45 X 45 cm (18 X 18 in)
2235808	Canvas Board 45 X 60 cm (18 X 24 in)	2235834	Canvas Board 60 X 60 cm (24 X 24 in)
2235809	Canvas Board 50 X 60 cm (20 X 24 in)		
2235810	Canvas Board 45 X 75 cm (18 X 30 in)		
2235811	Canvas Board 50 X 75 cm (20 X 30 in)		
2235812	Canvas Board 55 X 75 cm (22 X 30 in)		

# Tools



01



## CAMLIN SYNTHETIC GOLD HAIR BRUSHES (SERIES 66) (Round)

Synthetic Gold Hair Brushes from Camlin are of international quality with seamless nickel plated ferrules and perfectly balanced wooden handles. Suitable for use with Camel Water Colours and Camel Acrylic Colours as well as variety.

Product No.	Description	Size
	<b>Series 66 Round</b>	
2066768 & 2066769	Pack of 10 short handle synthetic gold hair round brushes in respective sizes	000 & 00
2066770 To 2066776	Pack of 10 short handle synthetic gold hair round brushes in respective sizes	0 to 6
2066777 To 2066779	Pack of 5 short handle synthetic gold hair round brushes in respective sizes	7 to 9
2066780 To 2066782	Pack of 3 short handle synthetic gold hair round brushes in respective sizes	10 to 12
2066761	Set of 7 assorted short handle synthetic gold hair round brushes	0, 2, 4, 6, 8, 10 & 12
2066762	Set of 4 assorted short handle synthetic gold hair round brushes	0, 2, 4, 6



# Brushes

## CAMLIN SYNTHETIC GOLD HAIR BRUSHES (SERIES 67) (Flat)

Synthetic Gold Hair Brushes from Camlin are of international quality with seamless nickel plated ferrules and perfectly balanced wooden handles. Suitable for use with Camel Water Colours and Camel Acrylic Colours as well as available in flat brush variety.

Product No.	Description	Size
2067771 to 2067776	Pack of 10 synthetic gold hair flat brushes in respective sizes	1 to 6
2067777 to 2067779	Pack of 5 Synthetic gold hair flat brushes in respective sizes	7 to 9
2067780 to 2067782	Pack of 3 Synthetic gold hair flat brushes in respective sizes	10 to 12
2067763	Set of 7 assorted Synthetic gold hair flat brushes	1,2,4,6, 8,10& 12
2067764	Set of 4 assorted Synthetic gold hair flat brushes	1,2,4,6



## CAMLIN WHITE BRISTLE BRUSHES (SERIES 56) (Hog-Flat)

Traditionally termed as a hog hair, these brushes are made from imported white bristles and are most suited for oil painting. The long and short handles facilitate various usages in landscape, portraits, painting for softening effects.



Product No.	Description	Size
2056771 to 2056776	Pack of 10 long handle white bristles flat brushes in respective sizes	1 to 6
2056777 to 2056779	Pack of 5 long handle white bristle flat brushes in respective sizes	7 to 9
2056780 to 2056782	Pack of 3 long handle white bristles flats brushes in respective sizes	10 to 12
2056501	Set of 7 assorted long handle white bristles flat brushes	1,2,4,6,8,10&12
2056787	Set of 4 assorted long handle white bristles flat brushes	1,2,4,6

## CAMLIN WHITE BRISTLE WASH BRUSHES (SERIES 58)

Camlin White Bristle Brushes are made out high quality natural bristles and provide optimum power to draw and spread of colours. Sporting polished wooden handle and rust – proof strong ferrule, these brushes allow the artist to cover large areas with thick colours effortlessly. In order to avoid the loosening of bristles, epoxy resin has been used as a binder. Available in a wide range of sizes between ¼" X 3".

Product No.	Description	Size
2058792	Pack of 10 brushes	1.25 cms (0.5 inch)
2058793	Pack of 10 brushes	1.87 cms (0.75 inch)
2058794	Pack of 10 brushes	2.5 cms (1.0 inch)
2058795	Pack of 10 brushes	3.75 cms (1.5 inch)
2058796	Pack of 5 brushes	5.0 cms (2.0 inch)
2058797	Pack of 5 brushes	6.25 cms (2.5 inch)
2058798	Pack of 5 brushes	7.5 cms (3.0 inch)



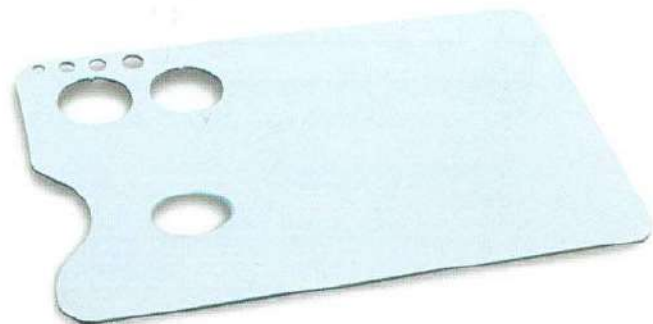


### CAMEL LARGE RECTANGULAR PALETTE

Camel Large Rectangular Palette is suitable for all colours. The palettes are made of durable plastic, which is easy to clean and store.

### CAMEL OIL PALETTE WITH 2 DIPPER (RECTANGLE)

Very popular and convenient accessory for artists working with fluid colours, these palettes are lightweight, break resistant, and economical. Available in rectangular shape.



### CAMEL OIL PALETTE WITH 2 DIPPER (OVAL)

Made out of acrylic sheet in classical oval shape, these palettes can be used for both oil and acrylic colours.



# Palettes



## CAMEL FOLDING PALETTES (AIR TIGHT)

Made from high quality plastic to ensure durability and lightweight, these beautifully designed folding palettes offer great convenience and utility. Easy to use and carry around, this palette also helps you carry the brushes safely. Suitable for all water based colours. It allows use of many shades and convenient mixing and thinning due to many slots of various size.



Product Code	Description
0515923	Large Rectangular Palette
0515481	Oil Palette Rectangular
0515483	Oil Palette Oval
0559422	Folding Palette
0515311	Tear-Off Palette

## CAMEL TEAR-OFF PALETTE

A new age neat option for the artists of today, this palette has 40 sheets of laminated paper. The artist can use the sheets to mix and blend any medium and dispose it after use. Complete with thumb hole and ridge for easy grip, it can also hold dippers.



### CAMEL BLENDING STOMPS

Made from high quality cellulose, the stomps are a must for drawing with charcoal, soft pastels etc. They help the artists to derive various effects from the dry use mediums. They are available in a set of six different sizes.



Product Code	Description
0515247	Pack of 6 Blending Stomps

# Hobby & School Range



# Fabrica Acrylic Colours



## CAMEL FABRICA ACRYLIC COLOURS

Fabrica Acrylic Colours are specially developed for hobby painting. They are best on fabrics, canvas, wood, earthenware, and can be used on almost any surface. They are easy and ready to use, do not require any medium. All you do is just dip the brush and start painting. They are available in 66 shades in 4 varieties – ultra, pearl, metallic and metallic powder.

### FABRICA ACRYLIC COLOURS-ULTRA RANGE

 236 Lemon Yellow ** (821)	 384 Chrome Yellow (822)	 173 Golden Yellow (824)	 283 Orange * (841)	 128 Flesh Tint (811)	 393 Scarlet (842)	 062 Crimson ** (843)	 341 Pink (846)
 242 Light Violet * (850)	 255 Mauve (845)	 356 Purple (852)	 239 Light Blue (864)	 071 Cerulean Blue (861)	 435 Ultramarine Blue ** (862)	 351 Prussian Blue (865)	 425 Turquoise Blue (863)
 298 Pale Emerald (866)	 233 Leaf Green (868)	 240 Light Green (881)	 106 Deep Green (892)	 281 Olive Green (884)	 391 Sap Green ** (883)	 482 Yellow Ochre (823)	 031 Burnt Sienna (803)
 032 Burnt Umber (806)	 259 Maroon (853)	 016 Black ** (802)	 479 White ** (801)	 024 Bamboo	 446 Vandyke Brown	 023 Brilliant Purple	 251 Magenta
 420 Terracotta (853)	 449 Vermilion (853)						

*These shades are only indicative and not exact due to printing limitations.*

# Fabrica Acrylic Colours



Product Code	Description	Product No.	Description	Multiple Order Quantity
2209600	Fabrica Acrylic Ultra Colours 10 Shades in 15 ml Bottles*			
2206602	Fabrica Acrylic Ultra Colours 6 Shades in 10 ml Bottles*	2209***	Fabrica Acrylic Colour - Ultra 15 ml	15 bottles
2206606	Fabrica Acrylic Pearl Colours 6 Shades in 10 ml Bottles^	2223***	Fabrica Acrylic Colour - Ultra 100 ml	5 jars
2206610	Fabrica Acrylic Metallic Colours 4 Shades in 10 ml Bottles#	2233***	Fabrica Acrylic Colour - Ultra 500 ml	2 jars
		2206***	Fabrica Acrylic Colour - Pearl 10 ml	15 bottles
		2206***	Fabrica Acrylic Colour - Metallic 10 ml	15 bottles
		2204171	Fabrica Acrylic Colour Metallic Powder Gold	10 g bottles
		2204400	Fabrica Acrylic Colour Metallic Powder Silver	10 g bottles



## FABRICA ACRYLIC COLOURS-PEARL RANGE



## FABRICA ACRYLIC COLOURS-METALLIC RANGE



These shades are only indicative and not exact due to printing limitations.



### CAMEL FABRICA 3-D GLITTERS

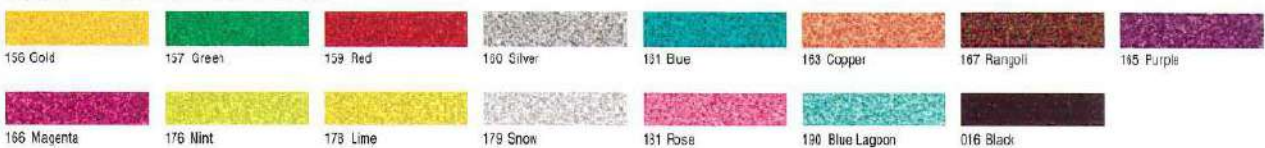
Best on fabric, canvas, wood, earthenware and thermocole. They are available in 15 Shades. DO NOT SHAKE. Only tap the bottle downward on hard surface with cap on. Remove cap and use directly from nozzle.

Product No.	Quantity	Multiple Order Quantity
2411***	20 ml	10 bottles

(Above stars (\*\*\*) beside product numbers are to be replaced with Shades numbers while placing an order)



### FABRICA 3-D GLITTER COLOURS



*These shades are only indicative and not exact due to printing limitations.*

# Cone liners



## CAMEL FABRICA CONE LINERS

Camel Fabrica Cone Liners create colourful 3-D designs or graffiti on fabric. They can also decorate non-fabric surfaces like canvas, wood, earthenware, thermocole etc. All you have to do is to shake the bottle, tap it gently on hard surface without removing nozzle cap, and start making the pattern from the nozzle directly. You could use Fabrica Cone Liner by itself or for outlining / highlighting designs painted with Fabrica Colours. Available in 26 Shades in 3 varieties: Ultra, Pearl, and Metallic.

All these colours are permanent on absorbent surfaces. Test their suitability on synthetic fabrics. All Shades are available in 20ml squeeze bottles.



Product No.	Quantity	Multiple Order Quantity
2611***	20 ml	10 Tubes

(Above stars (\*\*\*) beside product numbers are to be replaced with Shades numbers while placing an order)

## FABRICA CONE LINERS



These shades are only indicative and not exact due to printing limitations.



## CAMEL SPARKLE COLOURS

Camel Sparkle Colours are decorative craft colours which can be easily washed off with water. They are ideal for use on paper, thermocole, plastic, glass and pottery. These colours are non-toxic and safe for children. Available in a set of 6 assorted shades of 5 ml plastic tubes as well as 13 attractive individual shades in 15 ml tubes.

Product Code	Description
--------------	-------------

3304639	Sparkle Colours 6 Shades in 5 ml Tubes
---------	--

Product No.	Quantity	Multiple Order Quantity
-------------	----------	-------------------------

3309***	15 ml Tube	10 Tubes
---------	------------	----------

(Above stars (\*\*\*) beside product numbers are to be replaced with shades numbers while placing an order)

## CAMEL MEDIUM NO.1

This medium is made to dilute Fabrica Acrylic Colours for transparent water colour effects.

Product Code	Description
0517941	Camel Medium No. 1-50 ml Bottle

## CAMEL MEDIUM NO.2

This medium is specially made for Fabrica Metallic Powders. It mixes the powder to a paste form and makes it waterproof after complete drying. For application on fabric and almost on any surface.

Product Code	Description
0517943	Camel Medium No. 2-50 ml Bottle

## CAMEL PUFFY MEDIUM

Camel Puffy Medium is a specially formulated medium which when combined with Fabrica Ultra Colours gives the painting a puffed-up beautiful embossed matt finish.

\*For other varieties of Fabrica, first a layer of puffy medium is applied, then puffed-up by ironing or by using hair dryer, and painted over it with Fabrica Pearl or Metallic.



Product Code	Description
0509942	Camel Puffy Medium -15 ml Bottle



## CAMEL FABRICA GLUE

Now enjoy the art of decorating fabrics with mirror, coloured stones, lace and patchwork the easy way – No Sew, Just give Glue. Apply Camel Fabrica Glue to the appliqué and place it on the fabric and press. This super glue dries clear and fast.

Product Code	DESCRIPTION
0821132	Fabrica Glue 20 g Tube

# Glass Colours & Liners



## CAMEL GLASS COLOURS (WATER-BASED)

Camel Glass Colours (water-based) are an innovative range of colours that are ready-to-use and do not require any medium. They are non-toxic and come in squeeze type bottles. Ideal for painting on glass, acrylic, mirror and canvas, these are school level / amateur variety and not suitable for creations exposed to heat or sunlight. They are available in 21 brilliant shades.

Camel Water-based Glass Colours are also available in a trial pack of 10 ml X 6 shades, one 15 ml Black Glass Liner and free design substrate.

Product Code	Description
--------------	-------------

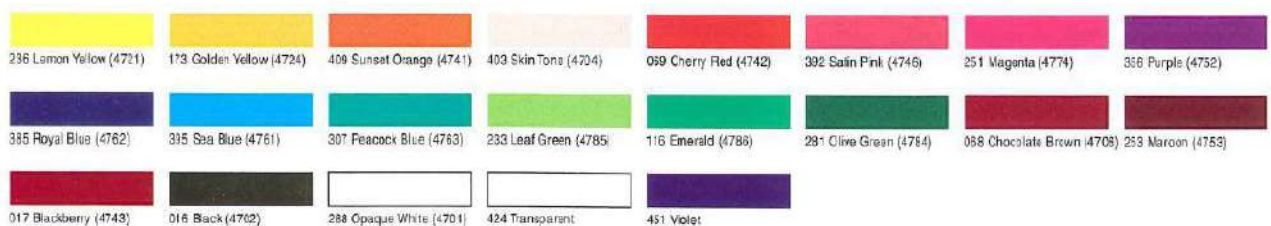
3006629	6 Shades in 10 ml Bottles with 15 ml Glass Liner Tube
---------	---

All Shades are available in 25 ml bottles with nozzles

Product No.	Quantity	Multiple Order Quantity
-------------	----------	-------------------------

3012***	25 ml	10 Bottles
---------	-------	------------

(Above stars (\*\*\*) beside product numbers are to be replaced with Shades numbers while placing an order)



These shades are only indicative and not exact due to printing limitations.



### CAMEL GLASS COLOURS (SOLVENT-BASED)

Camel Glass Colours (solvent-based) are a range of intense rich colours with more gloss. Solvent based glass colours are easily intermixable and excellent for professional use. It is important to use them in a well ventilated area. They are available in 20 ml pet bottles and in 15 vibrant shades.

Camel Solvent-based Glass Colours are also available in a trial pack of 20 ml X 5 shades, one 20 ml Medium, and one 20 ml Black Glass Liner.

### CAMEL GLASS LINERS

Camel Glass Liners are to be used for Water-Based and Solvent-Based Glass Colours. All Glass Liners are available in 20 ml tubes and in 7 shades.

Product No.	Quantity	Multiple Order Quantity
-------------	----------	-------------------------

3111***	Glass Liner 20 ml	3 Tubes
---------	-------------------	---------

(Above stars (\*\*\*) beside product numbers are to be replaced with Shades numbers while placing an order)

Product Code	Description
--------------	-------------

2911628	Solvent Based Glass Colours 5 Shades in 20 ml Bottles with 1 Glass Liner 20 ml Tube & 1 Medium 20 ml Bottle
---------	---

Product No.	Quantity	Multiple Order Quantity
-------------	----------	-------------------------

2911***	20 ml	10 Bottles
---------	-------	------------

(Above stars (\*\*\*) beside product numbers are to be replaced with Shades numbers while placing an order)

### GLASS COLOURS (SOLVENT-BASED)



### GLASS LINERS



These shades are only indicative and not exact due to printing limitations.

# Speciality Brushes



## SPECIALTY BRUSHES

Specialty Brushes enable users to achieve super results without over-stroking. All these brushes are shaped in a particular fashion to render quick and easy strokes by controlling the pressure and wrist/finger movements.



Product Code	Description	Product Code	Description
2042774	Speciality Brushes – Dagger	2044778	Speciality Brushes – Filbert
2046780	Speciality Brushes – Cat's Tongue	2043772	Speciality Brushes – Deer Foot
2041774	Speciality Brushes – Angular	2045772	Speciality Brushes – Liner



**Dagger**

**DAGGER:** This brush is used for thin lines as well as for painting single stroke petals and leaves.



**Cat's Tongue**

**CAT'S TONGUE:** The point of this brush can be used for fine lines, with the side for medium strokes and with the flat side of the brush for washes and large areas. They can be used in both lettering and washes.



**Angular**

**ANGULAR:** These brushes have an angled edge and are used for curved and varying width strokes. The artist can also paint flat while holding the brush at an angle.

**FILBERT:** This brush can be used in place of flats for broad coverage and in place of rounds for detail work by turning it on its side. It reduces the requirement for the artist to stop and switch brushes to achieve different effects.

**DEER FOOT:** This brush is used to dab on the paint in dry brush technique to simulate flowers, pods, grass, hair and texture.

**LINER:** These brushes are used for lettering, for branches and fence wire in landscape and many other fine line uses.



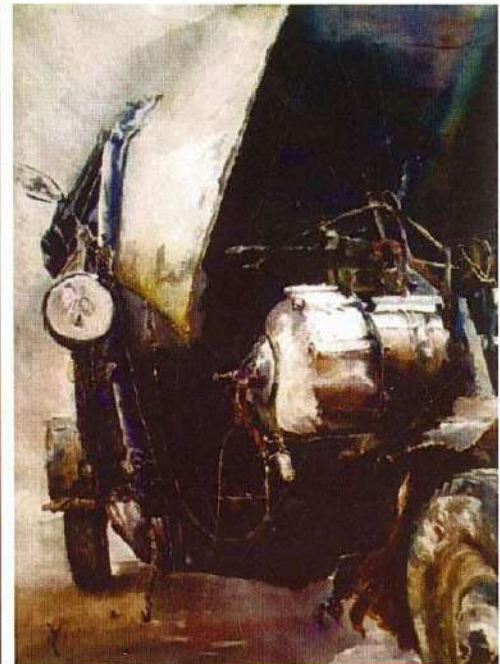
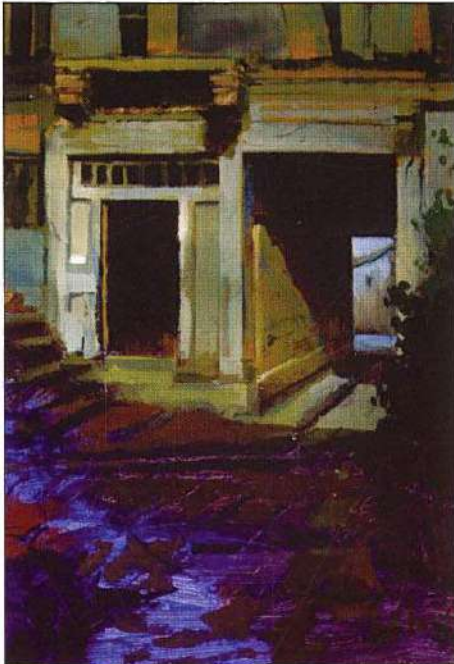
**Filbert**



**Deer Foot**



**Liner**



Camel Art Foundation (CAF), the philanthropic wing of Kokuyo Camlin Limited, has substantially contributed to the growth of art, artists, art appreciation and art education in India.

To celebrate the spirit of art, this non-profit organisation holds four art exhibitions each year, in the Northern, Southern, Eastern and Western regions, and plays host to more than 12,000 professionals and art students.

Since its inception in 1998, CAF has received 60,000 entries, held 55 regional exhibitions, awarded around 600 winners and sent over 130 EuroArt winners on an all-expense-paid trip to visit art galleries and museums in Europe.

Though the foundation's main objective is to promote art activities and create a platform for budding artists, it also provides an opportunity for professional artists to become popular and look beyond the Indian art scene.

Besides getting an opportunity to display their work, the artists with the best paintings are also rewarded with grand prizes from Kokuyo Camlin Limited.

The entries, categorised into professional artists and students, are sub-divided by the art media like Oil, Water, Acrylic and Drawing and Pastels. The contest is open to all participants above 18 years of age.

The first selection is done on the basis of photographs. The selected artists are then informed to send the original paintings across. The final judging is done on the original paintings and with the resume of the participant. The painting should not have been exhibited earlier.

# Camel Art Foundation



The panel of judges comprise Artists and Art faculty from the states of that particular region for a fair selection. It is very taxing for the judges to go through this judging process twice but there is always some element of surprise for them in the process.

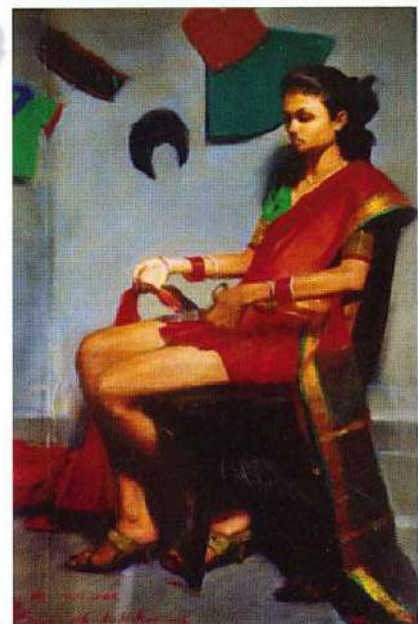
The selection is done

- a) For award-winning entries
- b) For exhibition

A catalogue is prepared for all winning and exhibited entries. The paintings are sold if the artist wishes so, and the entire amount is handed over to the artist. Kokuyo Camlin Limited does not keep any commission for the Foundation.

After the exhibition, the remaining paintings are returned to the artist through distributors or collected by the artist on the last day of respective regional exhibitions.


The entry forms are available with all Fine Art Dealers across the country as well as on the website [www.kokuyocamlin.com](http://www.kokuyocamlin.com), link Camel Art Foundation. The annual contest is launched around May/June every year. Receipt of entries closes around September / October annually.





+91-9988067475  behalinternational75  Behal745  www.behalinternational.com

 Behal International  Behal International  info@behalinternational.com

 718-719, Garden Enclave, Opp. Ryan International School, Amritsar, Punjab.